

Available with factory installed brass eyelets. The eyelets provide for a convenient and durable tie-off point for wire tying the waterstop to the steel reinforcement prior to the concrete pour. J P Specialties installs the brass eyelets at 12" centers, between the last two ribs, to provide maximum resistance and rigidity to the poured concrete weight.

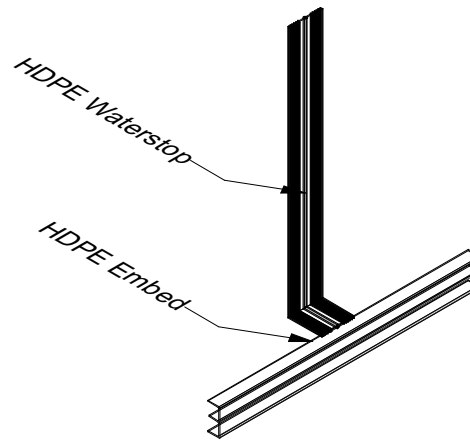
Note to specifier: To add factory installed brass eyelets to your Earth Shield specification, simply precede the specified part number with "EY." Example: If you are specifying PE936 and want the optional eyelets, call out part number EYPE936.

Earth Shield high density polyethylene waterstop can be heat welded to many* commercially available hdpe liners, T-locks, and embeds.

**Consult with Earth Shield Technical Support to perform sample weld prior to purchase.*

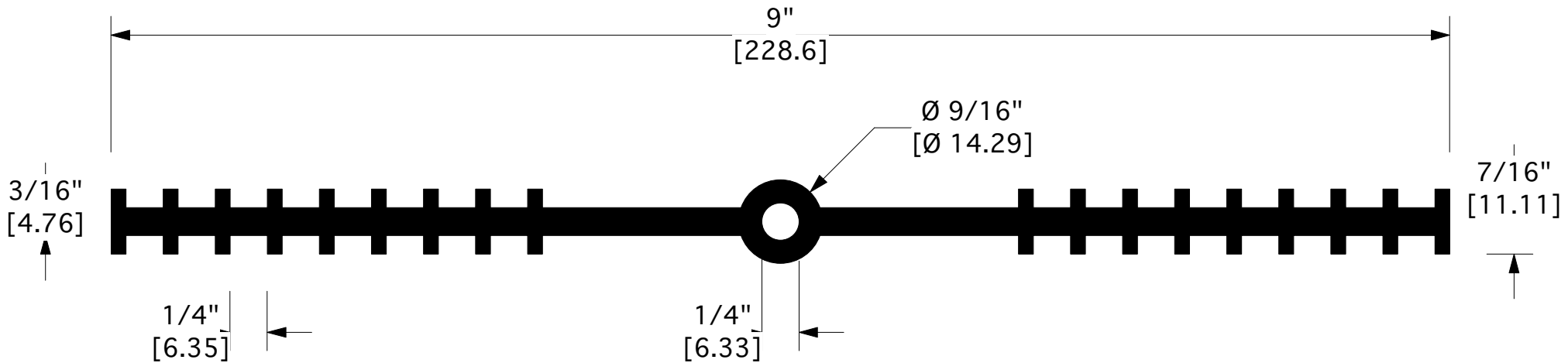
Additional profiles are available.

Dimensions are subject to manufacturing tolerances.



Typical Physical Properties

Spec Gravity	.943
Tesile Strength	5,100 psi
Ult. Elongation	750%
Hardness	90A
Brittleness	-148°F
Softening	207°F



Suggested Short Form Spec

Flexible Waterstop

Waterstop indicated in drawings and specifications for contraction (control), expansion and construction joints to be Earth Shield® High Density Polyethylene (HDPE) **Part No. PE936** as manufactured by **J P Specialties, Inc.** - 25811 Jefferson Avenue, Murrieta, CA 92562 - Phone 800-821-3859; International 951-763-7077; Fax 951-763-7074; Web www.earthshield.com; E-mail davidp@earthshield.com

1. Certified resistance to fuel, diesel fuel, and jet fuel.
2. No equals or substitutions allowed.

J P Specialties, Inc. / Earth Shield® Waterstop 25811 Jefferson Avenue, Murrieta, CA 92562 951-763-7077 · www.jp-specialties.com		
TITLE 9" RCB PE Waterstop		
PART NUMBER PE936	DRAWN BY DRP	DATE 09/13
CAD FILE NAME PE936	APPROVALS	SIZE A