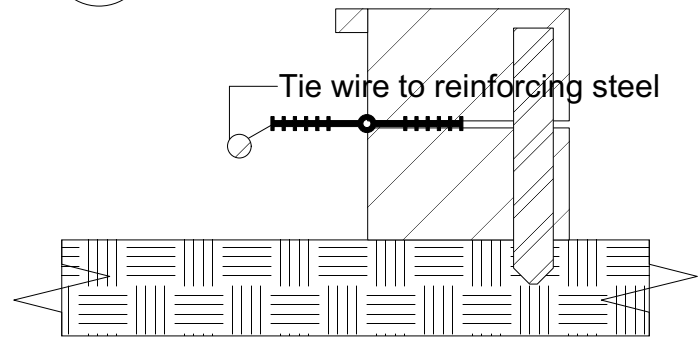
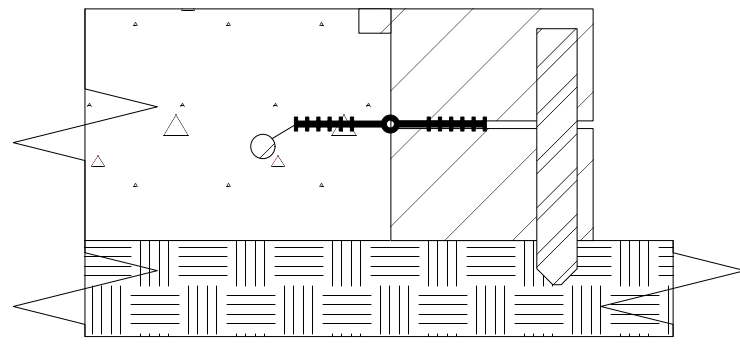


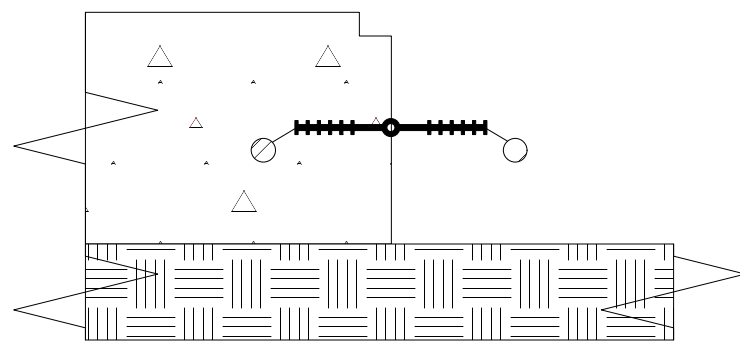
Step 1
Scale: 2" = 1'-0"



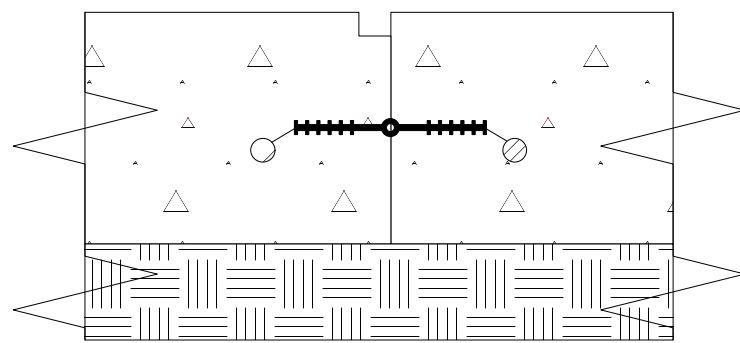
Step 2
Scale: 2" = 1'-0"



Step 3
Scale: 2" = 1'-0"



Step 4
Scale: 2" = 1'-0"



General Notes

1. 1. Brace JP636 using lumber and metal stake (as shown). Wire tie to adjacent reinforcing steel.
2. 2. First pour of concrete. Screed off top of forming lumber.
3. 3. Strip forming lumber and metal stake. Wire tie to adjacent reinforcing steel.
4. 4. Second pour of concrete. Screed off top of finished concrete.

J P Specialties, Inc. / Earth Shield® Waterstop 25811 Jefferson Avenue, Murrieta, CA 92562 951-763-7077 • www.jp-specialties.com		
TITLE JP636 Forming		
PART NUMBER	DRAWN BY <i>DRP</i>	DATE <i>10/14</i>
CAD FILE NAME JP636 Forming	APPROVALS	SIZE LTR